

Artworks list

Daniel Dewar & Grégory Gicquel *Oak dresser with harnessed oxen*, 2019

Oak wood
52 3/8 × 49 5/8 × 38 9/16 in
Courtesy the artists; C L E A R I N G, New York/Brussels;
Jan Kaps, Cologne; Loevenbruck, Paris
Inv. No. : DDGG190701

© Photo Diana Pfammatter, courtesy Loevenbruck, Paris.



Daniel Dewar & Grégory Gicquel *Oak relief with body fragments*, 2019

Oak wood
55 1/8 × 69 5/16 × 6 11/16 in
Courtesy galerie Loevenbruck, Paris
Inv. No. : DDGG190709

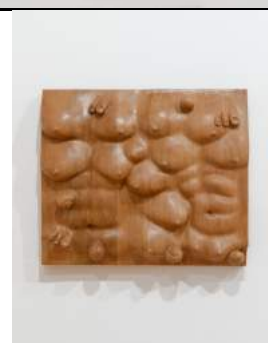
© Photo Diana Pfammatter, courtesy Loevenbruck, Paris



Daniel Dewar & Grégory Gicquel *Oak relief with body fragments and snails*, 2019

Oak wood
29 1/2 × 34 5/8 × 6 11/16 in
Courtesy galerie Loevenbruck, Paris
Inv. No. : DDGG190710

© Photo Diana Pfammatter, courtesy Loevenbruck, Paris



Michel Parmentier *5 août 1989 (August 5, 1989)*, 1989

Graphite rubbed on paper, 7 horizontal bands 38 cm wide in alternating tones (4+3), and, at the top and bottom, two partial neutral bands 19 cm wide.
119 11/16 × 119 1/16 in
Inv. No. : MP890805

© ADAGP, Paris. The Estate of Michel Parmentier. AMP – Michel Parmentier Archives, Brussels / Loevenbruck, Paris. Photo: Brussels, Philippe De Gobert



Michel Parmentier *27 juin 1988 (June 27, 1988)*, 1988

Graphite pencil on paper, 9 horizontal bands alternating de 33 cm wide (4+5) and, at the top and bottom, 2 partial graphite pencil bands of 5 and 6 cm
124 13/16 × 162 3/8 in
Inv. No. : MP880627

© ADAGP, Paris. The Estate of Michel Parmentier. AMP – Fonds Michel Parmentier, Bruxelles / Loevenbruck, Paris. Photo: Paris, Fabrice Gousset

